

# Reflections 2011 – The Annual Report

---

---



**First Presbyterian Church**  
**300 South Main Street**  
**Greensburg, Pennsylvania 15601**

## **Mission Statement**

In response to God's love, we at First Presbyterian Church of Greensburg commit ourselves to worship God with joyful praise and thanksgiving, to share our understanding of the love of God, to serve God's children and creation by being a caring community, to seek the will of God and the guidance of the Holy Spirit through study, prayer and the Presbyterian form of worship and government, and to cooperate with other Christian fellowships in sharing the Good News.



## The Necrology Report

---

---

*In thanksgiving to God for lives lived in faith,  
we dedicate this annual report to the glory of God and  
in memory of those members  
who have entered the Church Triumphant  
January 1, 2011 - December 31, 2011*

*James K. Templeton  
Helen R. McKelvey  
John E. Eisaman  
\*+Royle M. Mills  
Ruth C. Wilkinson  
Eliza J. Markle  
\*+Allan R. Poole  
Lois E. Rishel  
+James M. Hutchison  
+Thelma L. Sims  
Judith E. Buchanan  
Nancy K. Wandrisco  
Betty J. Bolen  
Susan L. King  
\*+Michael C. Moore*

*\*Elder +Deacon*

*“We want you to be quite certain, brothers, about those who have fallen asleep,  
to make sure that you do not grieve for them, as others do who have no hope.  
We believe that Jesus died and rose again,  
and that in the same way God will bring with him  
those who have fallen asleep in Jesus.”*

**I Thessalonians 4:13 & 14**



## Rev. Martin R. Ankrum – Pastor / Head of Staff

---

---

*“Jesus Christ is the same yesterday and today and forever.”*

**-Hebrews 13:8**

*“The church affirms *Ecclesia reformata, semper reformanda secundum verbum Dei*, that is, ‘The church reformed, always to be reformed according to the Word of God’ in the power of the Spirit.”*

**-The Book of Order, F-2.02**

Dear Friends,

The two quotes that open my report to you may be familiar to you. The first obviously comes from the Bible and speaks to the unchanging nature of the foundation of our faith: the person of Jesus of Nazareth.

The second quote comes from the Book of Order of our denomination and speaks to the underlying principle of change in the life of Christ’s church. The Latin formulation quoted within the quote dates as far back as the 16<sup>th</sup> century Reformation that brought the world the Protestant revolution and eventually, the Presbyterian Church.

The point to be made from pairing these is not that they stand in opposition to each other, but rather to embrace a principle of life within the church that all-too-often we fail to see: In Jesus Christ, we have a firm, unchanging foundation. God’s word to us in the person of Jesus of Nazareth does not change. It is to this person, this salvific event in Jesus the Christ, that the church is to bear witness in this world. This does not change. However, the Church of Jesus Christ is called to be open to change and reformation continually by our involvement in both the hearing of God’s word to us and our practice of the faith. Change is too often seen as threatening within the church for whatever reason that may be. As Reformed Christians, as members of the Presbyterian Church, Christ’s work in this world is best served when we remember that though our foundation in faith never changes, the way that we are called to be the church in this does and needs to change ... to continually be reformed by our approximation to God’s word and will in our lives.

To this end, please review the reports that you will find collected here. The committees, staff and boards of the church have been hard at work during 2011 to answer the call of God in our lives; to be Christ’s church as best we can be. Of course, all of this is open to evaluation and re-evaluation as we attempt, with each New Year, to embark again upon the path to which God calls us. It is a journey that is not only worth the trip, but is worth all of our whole-hearted prayerful support and participation.

Grace and peace,  
-Martin R. Ankrum



## Jean W. Blice– Clerk of Session

---

---

Congregational meetings were held January 30, 2011 (annual meeting), September 25, 2011 (meeting to elect new slate of officers, listed immediately below).

Elected at the September 25, 2011 Meeting of the Congregation:

**Elder-Trustee -- Three-year term, Class of 2015:** Art Caramella and Steve Ross

**Elder -- Three-year term, Class of 2015:** Ruth Ann Bagley, Jill Gaetano, Jean Hurst, Megan James, & Gary Wilkins

**Deacon -- Three-year term, Class of 2015:** Carol Behun, Joanne Doyle, Deane Markle, Jennifer Rudzke, Peggy Taylor, Roberta Wertz, and Donna Wetzel

**Deacon -- One-year term, Class of 2013:** Joe Pallitta

Elders Serving on the Session in 2011 were:

**Class of 2012:** Leigh Bach, \*Sheila Caramella, Barry Gaetano, Jerald Lowry, Dwaine McCurry, \*Stephen Ross, Sue Trafford

**Class of 2013:** \*Tom Carnahan, Janice Heming, \*Elizabeth Hoeldtke, Calvin Pollins, Alice Ann Templeton, Christine Terrill, Susan Walker

**Class of 2014:** \*Geoffrey Atkinson, Richard Baker, Linda Dickson, William Lingis, Jeff Ruff, \*David Snyder, Linda Turin

\*Elder-Trustee

### Weddings

*February 19:* Greg Rudzke and Jennifer Cheeseman

*May 21:* Chad Carlson and Sarah Alvarez

*June 11:* Diana Strekalovskaya

*June 25:* James Kindelberger and Gennifer Payne

*August 6:* Joe Kostrick and Anna Theys

*August 27:* Patrick Walker and Vanessa Deligi

*October 8:* Paul Tjck and Ginetta Tommarello

*October 22:* Andrew Biava and Amanda Kohl

*November 5:* Michael Proctor and Samantha Guerrieri

*December 10:* Matthew Zeglen and Katharine Kemp

### Baptisms

*February 13:* Jennifer Sue Cheeseman

*May 22:* Claire Elizabeth Hresko

*July 17:* Garrett Logan Rudzke

*September 25:* Elizabeth Claire Slater

*October 9:* Norina Adelle Biondi

*November 13:* Elie Marie Busatto

*November 20:* Braylyn Ray Graft

*November 27:* Jordan Nicholas Spencer

*December 11:* Vida Helen Hines

*December 25:* Falon Himmel Barclay

## Membership

Active Members as of December 31, 2010		902
Gains for 2011		
Profession of Faith	11	
Reaffirmation	5	
Restoration		
Certificate	11	
TOTAL GAINS		<u>+27</u>
		929
Losses for 2011		
Transfer	5	
Death	15	
Other	<u>4</u>	
TOTAL LOSSES		<u>-24</u>
		905
 <b>Active Members as of December 31, 2011</b>		<b>905</b>



---

---

## Rev. Michael A. Pacelli, III – Minister to Youth

---

---

2011 marked the 7<sup>th</sup> year of my ministry here at First Presbyterian Church. I continued with the leadership of the Middle School and High School groups as well as the monthly Spaghetti Dinner Fundraiser, the Acolyte Program, and the Deep End program that is a companion to our Mid-Week program which was renamed “7:06” in the fall of this year, along with Jan Schuchman, our Christian Education Director.

### Youth Groups

“Y-Fi” which stands for Youth of First Presbyterian continued very successfully this year. This year we focused on serving God by having a mind for missions. If we are not able to share our God-given blessings with those around us then we are not being the church of Jesus Christ. Through service, we share Christ’s love that has been shared with us.

The Middle and High School students are very energetic and it is a joy to lead them. The Youth Ministry Team of adults has also been a joy to lead. They include: Aaron and Jaci Runco, Mike Pascarella, Geoff Atkinson, Jim Kellam, Missy Dalansky, and Deb Pacelli. Without the love, support, and sacrifice of these great adults, Y-Fi would not be the tremendous program that it is.

### The Deep End

This fall, we continued with the third year of this component to our mid-week program. The Deep End is open to Middle School and High School students who have continued to be a part of the music ministry here at the church and we have added Bible study and games. Our theme so far has been “Being the Perfect Christian?”

### Big Events

The Youth Ministry team kept the students fairly busy this year. In January, Y-Fi opened up 2011 with our annual trip to Seven Springs to go snow tubing. February brought the Winter Retreat at Pine Springs Camp.

Students and chaperones traveled into the mountains where the weather was fantastic and we managed to have great fun in the snow. The students studied the Bible using the theme: “Who is God?” March brought “Jesus Christ Superstar” at the Palace Theater. There were no special events in April due to the Mystery Dinner Theater. In May, we wrapped up our regular programming and started summer programming, which included the return of “The Cue Tour” where we barbecue and do devotions in one of our many parks nearby. In June, we made it to Linn Run. July took us to Mammoth Park and Hempfield Park. In August we finished up the Tour at Twin Lakes. August also brought the Kick-Off for the semester where we blew up a big movie screen in my backyard and showed the movie “Soul-Surfer” We managed to get in a day of bowling when the weather wouldn’t cooperate for a canoe trip which we rescheduled in September when we made it back to the mighty Youghiogheny River. October brought our yearly trip to Kennywood Park for Phantom Fright Nights. November allowed us to give thanks by having a Thanksgiving Pot-luck feast when the students brought all of their favorite foods (from Swedish Fish to Shrimp). We finished up our programming year by going Ice Skating at PPG Place in Pittsburgh followed by dinner at Chipotle and then the gift exchange back here at the church.

### **Mystery Dinner Theater**

Beginning in March, Mike Pascarella began another huge undertaking of leading a bunch of amateur actors in rehearsals for our fourth Mystery Dinner Theater that would take place on April 10. The play was called “Suspect Hollywood” and would serve as a fundraiser for the Youth Group. The play once again brought youth and adults together to work and they all have so much fun bringing this play together. Thanks to Mike Pascarella and his family and all of the actors for their hard work!

### **Mission Events**

In June, the Middle School students had a Mission Retreat of their own. We traveled to Pine Springs Camp to be a part of their fourth “Mission Ex” Camp that was designed to go in the Johnstown area and do mission projects. We stayed at the camp in the evenings and traveled to the St. Vincent DePaul Thrift store in Johnstown during the day. While at SVDP, we helped to sort and clean up items that would be sold in the store as well as helping people unload / load their vehicles. Along with myself, Robin Jennings chaperoned the following students: Julia Schaming, Mandi Pascarella, Katie Maser, Selina James, Hadley Ankrum, Ben Clark, Jack Bickerton, Beth Carnahan, and Julie Heming

There was no High School Mission Trip this year due to lack of numbers and interest. In August, members of Y-Fi traveled to 8<sup>th</sup> Avenue Place in Homestead to serve members of the community a free breakfast and coffee. In September, we traveled to Shepherd’s Heart Ministry in Pittsburgh to cook and serve over 150 homeless people.

The fall brought us a couple of great opportunities to serve members of Christ’s Church, here and around the world. In October, a group of students and adults took the church van to the houses of some members and raked their leaves. In November, we took a collection for Samaritan’s Purse and their Operation Christmas Child Program, in which we packed over 50 shoeboxes of items to send to needy kids across the world.

### **Fundraising**

In order to help fund a lot of the big activities, the students and leaders pitched in on some fundraisers. Some of these include the Mystery Dinner Theater, and the annual Wreath Sale.

### **Personal Ministry**

Beyond leading the Middle School and High School Students, I have had many opportunities to minister in different areas of our congregation.

I have continued to help train our newest Acolytes as well as set up the schedule for the worship calendar.

I have had many opportunities to help serve as worship leader for FPC. I have been given a chance to Lector, give many children's sermons, morning sermons, as well as participate in our communion services. This has brought me great joy as I am glad to help this congregation worship God any chance that comes to me.

One of my favorite projects was the second Children's Christmas Devotional that I edited and put together for our younger students. We wanted to send something home with the students that they and their families could read together during December in anticipation of the coming of the baby Jesus. I asked writers of all different ages and backgrounds to give me their favorite Christmas memories that went along with words from our favorite Christmas carols and it will be something that I won't ever forget.

This fall, I was finally able to finish a long-standing project that overhauled our website at [www.fpcgreensburg.com](http://www.fpcgreensburg.com). I feel that the new website is cleaner and more accessible and would hopefully allow for more web traffic.

The Spaghetti Dinner is a long-standing tradition here at FPC which allows both fellowship and fundraising. I am both the supplier and the coordinator for the dinners with a lot of help from the Education Committee and some dedicated volunteers. All of the dinners were very successful as they helped support various ministries in the church. Each fourth Wednesday and Thursday of the month, we worked very hard to provide a hot and tasty meal that can be enjoyed by many members of the church and the community. I want to give a special thank you to all of the workers who gave of their time to help with these dinners.

The Spaghetti Dinners raised money for the following committees/organizations this year:

January: \$349.72 – Camp Scholarships  
February: \$419.38 – Vacation Bible School  
March: \$526.08 – Camp Scholarships & VBS  
April: \$580.61 - Softball Team  
May: \$388.57 – Music Department  
September: \$426.16 - Education  
October: \$347.76 – Youth Missions  
November: \$370.90 – Youth Mission

I have truly been blessed to be allowed to participate in the many great ministries here at First Presbyterian Church and I know that God will continue to bless us through '12 as He did in '11. You can see pictures of our many events in the Youth area of [www.fpcgreensburg.com](http://www.fpcgreensburg.com).

Faithfully Submitted,  
Michael A. Pacelli III; Minister to Youth



## **Edgar Highberger – Minister of Music & Organist**

---

---

THE FIRST PRESBYTERIAN CHURCH MUSIC MINISTRY 2011

Edgar Highberger, Minister of Music and Organist

Anita Garr, Director of Elementary Music and Assistant Organist

Michelle Harbaugh, Assistant to the Minister of Music

Karen Cole, Assistant Handbell Director and Director of Instrumental Ensembles

Lynda Glover, Music Series Hostess

Wendy Matchett and Jean Bunting, Choir Assistants

Chancel Choir (Adult)

Choral Scholars and Soloists—Evelyn Houser, Michelle Harbaugh, Jerry Hopkins, Robin Jennings, David Martin, Sarah Noone, Cameron Pampus, Katie Zuzik

Joyful Noise Singers (Middle School and High School)

7:06 Singers (Elementary)

Cherub Choir (Pre-School to Grade One)

Sunday School Choir (Elementary and Middle School)

Kirk Ringers (Adult Handbells)

Organ Scholars: Cory Clippinger and Evan Bellas, Organist of the Graystone Presbyterian Church in Indiana, Pennsylvania

The Thirty-Seventh and Thirty-Eighth Music Series of Workshops, Concerts, and Recitals

The worship of God is central to life, and music has been an important element in corporate worship throughout the history of Christianity. Music enriches our worship experiences by reinforcing the meaning of Scripture, and it deepens the meaning of our prayer and praise. At First Presbyterian Church, we strongly affirm the ability of music to address us and engage us as a religious people. John Calvin once said that “music is a funnel into the heart through which should pour the word of God”. The First Presbyterian Church has maintained a long-standing tradition of music. You can join a choir to enhance and facilitate worship, or you can be a part of the congregational choir, our largest choir. The old adage continues—SINGING OR RINGING IN A CHOIR CAN BE A JOY FOR A LIFETIME.

At First Presbyterian Church, organ, instrumental, choral, and vocal music, plus the congregational hymns and responses continue to be selected for their relevance to the three-cycle lectionary readings, as John Calvin clearly directs that the music of worship should be theologically disciplined.

Our music series, now in its thirty-eighth consecutive year, continues to make a special contribution to the religious and cultural life of the Greensburg area. Some of the events were presented in cooperation with the Seton Hill University Sacred Music Program and the Seton Hill University Chapter of the American Guild of Organists. The offerings of the 2011 season included the following:

Sunday, February 20 Marc Toure, Baritone, in A CONCERT OF SACRED VOCAL MUSIC with Edgar Highberger as accompanist.

Sunday, March 6 HYMN FESTIVAL FOR TRANSFIGURATION SUNDAY-TRANSFIGURED IN GOD’S GLORY with readers, choirs, and instrumentalists.

Friday, March 11 SENIOR ORGAN RECITAL BY SHU STUDENT, CHAZ BOWERS.

Friday, March 18 SENIOR ORGAN RECITAL BY SHU STUDENT, ROBERT LYNCH.

Friday, March 25 ORGAN RECITAL BY DR. LARRY TAYLOR, ORGANIST, Associate Professor of Music at Bridgewater College, Bridgewater, Virginia. Received the 2011 Distinguished Alum Award at Seton Hill University. Dr. Taylor also presented an master class in the organ loft for Seton Hill organ students.

Friday, April 1 **FRANKLY, FRENCH!** Piano and organ students from the Seton Hill University Division of Visual and Performing Arts performed music by French composers of the 18<sup>th</sup>, 19<sup>th</sup>, and 20<sup>th</sup> centuries.

Saturday, April 2 **A CELEBRATION OF THE SACRED** with the **WESTMORELAND CHORAL SOCIETY** and the **PITTSBURGH FESTIVAL ORCHESTRA**, with Tom Octave as conductor. Included on the program was **Missa Mysterium** by Nancy Galbraith, Professor of Composition at Carnegie-Mellon University.

Wednesday, June 29 **A CONCERT BY CANTO SPIANATO** under the direction of Michelle Harbaugh. This choral ensemble is made up of high school and college students.

Saturday, November 5 **A HANDBELL WORKSHOP WITH DONNA KINSEY**, Nationally known Handbell Specialist. The sessions took place in our music suite.

Friday and Saturday, December 2 and 3 **ANNUAL CHRISTMAS CONCERTS** presented by the **WESTMORELAND CHORAL SOCIETY** and the **SOUTHMORELAND CHILDREN'S CHORUS**.

Sunday, December 18 **INTERGENERATIONAL CHRISTMAS DRAMA WHY THE CHIMES RANG** with multiple choirs and instrumentalists. Presented in cooperation with the Christian Education Department.

Saturday, December 24 **THE FORTY-SEVENTH ANNUAL FESTIVAL OF LESSONS AND CAROLS** with Readers, Multiple Choirs, and Dr. David Holben, Tubist, Rebecca Pascarella and Dawn Usry, Flutists, Christopher Gaudi, Oboist, Steven Fassnacht, Cellist, Jeffrey Ruff, Timpanist, and Amber Blair, Bagpiper.

Wednesday evening Advent services in the chapel included Musical Meditations by Dawn Usry, Flutist; Marc Toure and Robin Jennings, vocalists, and the Seton Hill University choral scholars, Sarah Noone, Cameron Pampus, and Katie Zuzik.

Monies from the Welty Music Fund and from other private sources continued to enable further repairs and renovations to our fine Austin pipe organ and the M. P. Moller gallery organ in our church sanctuary. We hope to preserve what is, without a doubt, one of the Greensburg Area's cultural assets. The instrument is now valued at well over a million dollars.



## **Jan Schuchman – Director of Christian Education**

---

---

The Education Committee, for 2011 consisted of Jerry Lowry (chair), Linda Dickson, Susan Walker (elders), Art Caramella, Ginger Collier, Ed Bunting, Betty Hammer, Julie Ankrum, Robin Jennings, and staff Stacy Somers, Mike Pacelli and myself. Together we are in charge of the programming, and planning for a number of areas of education and events throughout the year.

Our Sunday school program has been well attended this year. We are pleased to offer classes from preschool through adult. Our teaching staff has been wonderful and encourage the students to come each week. Our teaching staff: pre-k Mecal McDade, Betsy Spigarelli, Gretchen Lowry; 1<sup>st</sup>-2<sup>nd</sup> grade Heather Wimple and Jennifer Rudzke; 3<sup>rd</sup>-4<sup>th</sup>, Jean Bunting, Deanie Markle, Kathy Martinko; 5<sup>th</sup>-6<sup>th</sup> grade Carol Henry; 7<sup>th</sup> grade confirmation Bill Lingis, Linda Dickson; 8<sup>th</sup> grade confirmation Robin Jennings; 9<sup>th</sup>-12<sup>th</sup> grade Mike Pascarella and Geoff Atkinson; adult class Rick Terrill.

Nursery: Our church time is available at both services our caregivers, Kelly Duran and Courtney Hutchinson have assisted with special service times too. The area is a pleasant space and the children are well cared for by our staff. It has been wonderful to have this continue their service to FPC.

Our 8<sup>th</sup> grade confirmation class consists of Mitch Golden, Ben Bickerton, Conner Monzo, Hadley Ankrum, Madison Kladnik, Abby Stoner, Morgan Bellush and Mary Markle. We will look forward to their confirmation service in May, along with their faithfulness in attending and assisting with the work of the church.

Children and Worship has gone through some attendance challenges. Our curriculum 'One Room Sunday School' involves programming for ages 4 through 4<sup>th</sup> grade; therefore we are prepared for whoever attends the second service.

7:06/Deep End; this interim program has been our mid-week program. Last year it was determined we needed to make some changes; a phone survey was done and adjustments were made for the interim. A Task force was formed to review what we have and how to best move forward to something new for next fall. We have 8-15 faithful attendees involved, along with some friends; our adult volunteers have been great, providing meals and assistance with programming. Pray for our task force to find the best way to keep mid week programming involved at FPC.

VBS 2011 was called Shake it up Café 'where kids carry out God's recipe!'. Approximately 75 children, youth, adults-staff worked together, enjoying a great week in June. Our theme/lessons included: Be Ready for God, Give Happily to God, Believe fully in Jesus, Remember Jesus Often and Celebrate God Forever. All of the themes included a Bible story, and scripture. The crafts, music, games and snacks helped to support the lesson of the day. It was a pleasure to work together and see our children, youth and adults enjoying and learning throughout the week.

Mission work: Our VBS mission was to help support our local food banks and pantries. Everyone was very generous, filling shopping carts, boxes and bags with non perishables. Sunday school helped to support another book drive for Children's Hospital. We keep in touch with our VIPS with cards and small gifts during the year. We try to work closely with our Deacons, Youth, Music, Mission and other committees and departments to further mission work within our church. It is a good thing to help our children and youth learn to consider the needs of others.

We were pleased with the attendance at our picnic in August. Our theme was 'tailgating' and our congregation participated in the sports oriented theme with table decorations, outfits, cheers, music and food!! Mt Odin is a great location with areas to play for the very young to the young at heart. It is a good way to enjoy fellowship.

Pine Springs continues to be a favorite place for our summer campers. Several of our children and youth attended the various camps this year. Pine Springs is also a great place for retreats, being used by our confirmation classes and our youth.

There were additional activities such as Cornerstone (adult gatherings for dinner), Spaghetti dinners, a hayride and other all church events that bring our church family together. We always like to add activities too, adding a Sunday afternoon bowling event to the calendar!

It is a blessing to work with our staff and congregation at FPC.



## Campus Ministry Task Force

---

---

Regardless of the translation, Ephesians 4:12 succinctly sums up Campus Ministry at First Presbyterian - preparing God's people for works of service, so that the body of Christ may be built up.

Our congregation has long recognized the value of helping all God's saints discern and define their call to ministry. Our campus ministry program also allows FPC to serve as a training ground for seminary students, while reaching beyond our doors to the Seton Hill community.

In 2011, FPC continued to nurture Melanie Kim, our first Seminary Assistant for Campus Ministry, as we deepened our relationship with Seton Hill University. An act of Providence served as another building block. During Lent, the Campus Ministry Task Force hosted Sr. Maureen O'Brien, Rabbi Sarah Perman, Melanie's seminary instructor Jay Lewis, and his wife Bonnie of the YWCA, and our own Peg Carpenter and Carolyn Falcon. This cadre of travelers shared a trip to the Holy Land and further demonstrated how interconnected we are.

As Melanie's field education assignment came to a close, the task force again approached Pittsburgh Theological Seminary to be considered a field education site. We are blessed to have Joe O'Malley and his wife, Shelley, working and worshipping alongside us this year.

Just as each of us possesses different gifts and talents, we are all one body. Melanie helped to strengthen our institutional relationship with Seton Hill's Office for Campus Ministry; Joe has spent more time among Seton Hill students, attending campus Bible studies and bonfires. Our congregation was again supportive of Christmas on the Hill, volunteering to serve the holiday meal to students, and we continue to provide a welcoming place for worship and fellowship as students are able.

Where will this ministry lead? Only God knows, but First Church remains faithful in equipping the saints to do God's will.

Submitted by Robin Jennings, Chair – Campus Ministry Task Force



## Church Officer Nominating Committee

---

---

This committee first met in April 2011 in order to understand the scope and responsibilities of the offices for which it would seek nominations. Reverend Ankrum led us in this search. In May the committee convened to establish suggestions of members who might faithfully serve in the capacities of Elder or Deacon. Throughout the summer we continued this search and proceeded to create a slate of officers for three year terms beginning in 2012 and to fill one vacant Deacon position for a one year term. These names were proposed at the Fall congregational meeting. As was the case in recent past years, filling the complete slate of Deacons proved difficult, and only eight of eleven positions were submitted. The Board of Deacons will restructure to account for this.

The final role of this committee was to create a proposed slate of individuals to become members at large on the Church Officer Nomination Committee for the 2012 year.

Members of the 2011 committee diligently and faithfully performed as a team to work toward finding good Christian leadership for the church in the ensuing years. They are to be commended and thanked. The committee included: William Courtney, Rebecca Demuth, Janice Heming, Gregg Martinko, Todd Turin, and David Wentzel. Elder Stephen Ross served as chair.

Stephen Ross, Chair



## Board of Deacons

---

---

Deacons serve the lord by conducting the caring ministry of the church. Most visibly as ushers and greeters, deacons welcome our congregation and visitors during each Sunday worship service. Beyond Sundays, deacons do benevolence work, visit VIPS and are alert to the spiritual needs of the congregation. Deacons also organize a variety of programs that benefit the community and local charities.

In 2011, the Board of Deacons met the second Tuesday of each month (excluding July). We joined the Session at the church leadership retreat on January, 15, 2011. During this meeting, David Wentzel continued on as moderator and Melissa Delansky was elected as secretary. We reorganized committees, elected new representatives to the personnel, worship and nominating committees.

A new committee was formed in February as a task force to make suggestions on how the Board of Deacons could service the First Presbyterian church community better and also stream line the duties that were being performed every Sunday. The Deacons Task Force Committee consisting of four deacons and Rev. Ankrum met every other Sunday over a 4 month period to discuss what needed to be done to get the church community more involved in the Sunday services and how to make being a deacon more fulfilling. The committee suggestions were presented to the Board of Deacons as ideas for consideration. They are as follows:

Restructure the ushering teams from 7-8 to 6 member teams.

Go from 4 teams to 6 teams of ushers, creating a cycle of 2 weeks ushering service from the current 4 weeks ushering assignment.

Having congregation members act as Greeters and hand out the Sunday bulletins before the services.

The Board of Deacons agreed to try the suggestions over the summer single service months. For the most part the changes worked out well. The Task force will continue to evaluate how to get the First Presbyterian Church community more involved in the church activities.

On October 08, 2011 the annual fall Stewardship/Leadership Retreat was held with Rev. Ankrum updating the Elders and Deacons on where we are as a church and the direction we need to go in the future to grow and prosper.

Dr. Douglas Holben, Minister of Visitation, was very active in participation with the deacons. He opened each meeting with prayer, song and scripture lessons.

Rev. Martin Ankrum presents a monthly update of church business plans to the deacons, making the deacons aware of the Presbytery decisions, Sunday worship schedules and upcoming church activities.

The Board of Deacons is comprised of three committees, each with responsibility for specific areas of service.

The Church Services Committee will organize, lead and oversee the ministry of the hospitality functions of the First Presbyterian Church of Greensburg, which include: ushering for church services, coffee hour and accessibility and approachability of the church. This committee will also be responsible for the deacon's annual picnic and Christmas dinner. In January they made team assignments for ushering duties for the 2011 calendar year.

The Deacons Annual Picnic was held on July 15, 2011 at St. Clair Park on a Concert in the Park Friday night. It was an enjoyable night of entertainment for all who attended. Sue Woodard and Donna Wetzel headed this event. All extra food and drinks were donated to the Welcome Home Women's Shelter.

The Church Services Committee over saw the church pew rack cleanup and refill with all the deacons assisting with the duties. This was done during our scheduled November meeting.

The Deacon's Christmas Party was held on December 06, 2012 with homemade cookies, desserts and soft drinks being served. The theme of the party was "The Gift of Giving". Everyone in attendance was to bring a gift of bedding or personal items to be given to the women and their children of the Welcome Home Women's Shelter located in Greensburg. Sue Woodward headed this project up along with the rest of the committee.

The Community Services Committee provided numerous opportunities for FPC members to get involved with events benefiting the community.

The Community Service Committee promoted the Big Brothers & Big Sisters Annual Bowl-a-Thon on April 04, 2011 with 12 church members bowling.

FPC sponsors a two mile section of Route 119 starting at the Aerobic Center and goes north to Barnhart Road. April 30, 2011 was the spring date for the cleanup and 33 bags of trash were collected. October 29, 2011 was the fall cleanup date with 28 bags of trash being collected.

On November 02, 2011 the deacon's sponsored the Second Sunday Supper with 67 people being served. Sally Rager and Cheryl Baker oversaw this community event.

The committee also continued the Bear-y Christmas program. Gifts benefit children of Head Start. The caring and giving nature of the congregation helps provide these children with a brighter Christmas.

The Pastoral Care Committee is responsible to reach out to church members in time of need by providing spiritual support and physical comfort as appropriate.

The Pastoral Care Committee is responsible for purchasing the Care Notes which are inspirational booklets for people with differing concerns. They are located in the Dining Room.

The Pastoral Care Committee provided the VIP members with an Easter card, Thanksgiving card and a Christmas card with a book mark all which were made by the children of the church. Beth McAtee headed up these projects with the help from the committee members.

The following Deacons volunteered for these committees:

Worship Committee: Jim Kellam

Personnel Committee: Debbie Golliet

Church Officer Nomination Committee: David Wentzel and Greg Martinko.

Deacons Task Force Committee: Greg Martinko, Sarah Hines, Tim Hines David Wentzel and Rev. Ankrum.

Worship Committee: Donna Wetzel.

Four Deacons Resigned in 2011:

Paula Purnell, David Sever, Deborah Golliet and Beth McAtee.

2011 Board of Deacons Members: David Wentzel – Moderator, Melissa Dalansky – Secretary, Cheryl Baker, Carol Behun, Mary Ann Berkey, Judith Breon, Michael Brighton, Heidi Jo Brown, John Henry, Sarah Hines, Tim Hines, Donna Jenkins, James Kellam, Greg Martinko, Mark McDade, Joseph Pallitta, Nancy Pallitta, Sally Rager, Aaron Runco, Jacqueline Runco, James Salathe, Nancy Wallace, Roberta Wertz, Donna Wetzel, Sue Woodward, Linda Yaley.



---

---

## Membership & Evangelism Committee

---

---

Elders Janice Heming, Bill Lingis, Dwaine McCurry, and members-at-large Carol Behun, Jill Gaetano, Kathy Martinko and Sue Woodward sponsored three new member classes for anyone wishing to commit to membership with our community of faith at FPC.

The classes were held in January, March and September during which time 18 new folks were welcomed into our fellowship. In addition, we received 9 new members of the confirmation class in May. As we met with each group we were excited to learn about how they had come to know about our church family and about the gifts for ministry that they could bring to FPC. An important part of being a member of the Body of Christ is finding a place where the unique gifts that each person has can be used in ministry to strengthen and uphold the congregation and the membership and evangelism committee hopes that each new member can find a place to use his or her gifts in ministry and mission of our congregation. We are working to find a way to make that possible as we continue to welcome new people of all ages into our fellowship.

The committee was very busy this year sponsoring the following activities: Bring a Friend to Church Sundays, St. Vincent Summer Theater, Concert in the Park, Wild Things baseball game, a nature hike and a zumba class.

The committee hosted a reception with Rev. Ankrum and Julie at their home in May for all new members who had joined the church during the past year. In September the 50 year members were honored by the congregation during a special worship service.

This year we hosted our third annual Christmas parade open house. The church was open during the parade and everyone was invited to come in out of the cold for some hot chocolate and cookies. We estimate that over 400 people came to the open house.

We encourage our members to invite neighbors and friends to come and be a part of this exciting congregation. The best way to continue to grow our church is to share your excitement about how God has blessed your life through the life and ministry of this congregation.

Submitted by: Janice Heming



## Mission Committee

---

---

### **First Presbyterian Church Nurtures the Body**

“Second Sunday Supper” completed its eighth year of mission service in 2011. The monthly Sunday Supper menu was never the same. Dinner menus varied from meatloaf, green beans and mashed potatoes to stew to hamburgers. Throughout the year volunteers served over 1000 people at 12 hearty and nutritious Second Sunday suppers. Take out meals were available. During the past year, many church members donated their talents as they made cakes, pies, cookies, soup, etc. and also donated a total of \$690.00 in cash to the Second Sunday efforts. First Presbyterian Church is grateful for the collaboration with the Westmoreland County Food Bank for many of the Second Sunday dinner food supplies FPC hosted Westmoreland County Food Bank “Fresh Express,” an opportunity to distribute food to needy families.

### **Christmas Day Dinner at FPC:**

It was a Merry Christmas for 170 guests and more than 30 volunteers who enjoyed a wonderful Christmas dinner. This annual community celebration is made possible by monetary donations as well as donated items such as cakes, pies and decorations generously provided by members of the congregation and the community. For most of December church members signed personal wishes of good tidings on cards sent out with the meals delivered to 120 guests. Our 50 dine-in guests enjoyed a meal and fellowship at beautifully decorated tables thanks to our talented decorating committee. Musical entertainment filled the dining room with Christmas cheer and as always the delicious meal left everybody full. Thank you to all who made this Christmas dinner possible! May I say it is an honor to be part of a congregation which opens its heart and doors to all in celebration of the birth of The Christ who loves us all.

### **DONATIONS FOR MISSION USE**

Second Sunday Suppers	\$740.00
Christmas Dinner	\$573.00
Doris Nevin Memorials	\$1,265.00
Roy Mills Memorial	\$25.00
Donations for Joplin Relief	\$2,310.00
Donation for Japan Relief	\$1,000.00
Donation for USA-Tornado & Flooding Victims	\$100.00
Donations for Jillian Manning – YAV	\$1,025.00
Serrv Sale	\$1,333.00
Session Benevolence 11 % of Worship & Sunday	
School Offerings Up to Budgeted Amount	\$49,019.00

## HOW THE MISSION COMMITTEE DISTRIBUTED OUR MISSION DOLLARS

First Fruits Contribution	\$35,650.00
Second Sunday Supper Expenses	\$1,114.74
Pastor's Discretionary Fund	\$3,326.47
Pine Springs Camp	\$1,000.00
Youth Mission Trip 2012	\$1,617.53
Westmoreland County Food Bank	
– Weekend Backpack Program	\$1,000.00
Cameroon Health & Education Fund Inc.	\$1,215.00
Northeast Wee Kirk Conference	\$500.00
Blackburn Center	\$1,000.00
Westmoreland County Food Bank	\$1,000.00
Jillian Manning – YAV	\$4,025.00
USA – Tornado & Flooding Victims	\$100.00
Japan Relief	\$1,000.00
Agua Viva Childrens Home & School (Guatamala Children's Mission)	\$360.00
Joplin Relief (Includes Balance of Ross Memorials)	\$5,310.00
Christmas Dinner Expense	\$196.64
Gone Fishin	\$1,000.00
Pittsburgh Theological Seminary	\$500.00
CEPAD – Patio Project	\$1,000.00
Serrv Sale	\$1,333.00

## SPECIAL OFFERINGS OF THE PRESBYTERIAN CHURCH USA

Our congregation has given to these offerings designated for Mission work the past several years.

One Great Hour of Sharing	\$1,457.01
Pentecost Offering	
60% to Presbytery	\$675.75
40% to ParentWISE	\$225.25
to Big Brother Big Sister	\$225.25
Peacemaking Offering	
75% to Presbytery	\$559.50
25% to YWCA - Unity Coalition	\$186.50
Christmas Joy Offering	\$933.00

## ADDITIONAL OFFERINGS

Through special events and collections, our congregation supported others in need both in our community and across the globe.

2¢– A-Meal for the Presbyterian Hunger Fund	
75% to Hunger Fund	\$1,087.65
25% to Westmoreland County Food Bank	\$362.55
Christmas Eve Offering 2009	
Westmoreland County Food Bank	\$636.13
Welcome Home Shelter	\$636.13
The Salvation Army	\$636.13



## Personnel Committee

---

---

The 2011 Personnel Committee took up matters related to recommendations from the Budget Task Force, including equalization of staff health insurance benefits and whether to continue to fund the Seminary Assistant for Campus Ministry position; performance reviews; and recommendations for staff salary and cost-of-living increases.

In response to a recommendation from the Budget Task Force, the Personnel Committee proposed a standard health benefit for all church fulltime staff. Also in response to the BTF's recommendation, Personnel voted to continue the Seminary Assistant for Campus Ministry position, but to fund the work through the memorials and special funds generously provided by members and friends for this use.

FPC Personnel performance evaluations were reviewed and again showed what outstanding and committed staff our church is blessed with.

The 2012 budget for FPC personnel was presented to the Session and Treasurer. A 2.5% cost of living increase was proposed.

Personnel Committee members during the year were:

Head of Staff: Reverend Martin Ankrum

Property & Finance Committee and Recording Secretary of Personnel Committee: Tom Carnahan

Mission Committee: Barry Gaetano

Membership & Evangelism Committee: Janice Heming & Bill Lingis

Personnel Chair and Worship Committee: Jeffrey Ruff

Worship Committee: Linda Turin

Education Committee: Sue Walker

Board of Deacons Member: Donna Wetzel



## Property & Finance Committee

---

---

In 2011, the Property and Finance Committee of the Session accomplished the following:

- Renovated the office spaces and added a new half wall with shelving for the library.
- Digitized the card catalog of the library. Thanks to Jerry Cumer for all his hard work.
- Replaced all the lighting fixtures in the day care area.
- Contracted for the repair of a pair of stained glass windows from the sanctuary. To be reinstalled in the spring of 2012.

- Had the sound system in the sanctuary checked and rebalanced.
- Purchased new individual hearing devices.
- Began the study for air-conditioning the sanctuary, rewiring and improving the lighting. Also a hazardous materials survey was conducted as part of this plan.
- Participated in a thorough discussion of the annual budget with the Budget Task Force Committee to find ways to be more economical in our operations. See Budget Task Force report.
- Added large closets to the classroom used by the Confirmation Class and re-carpeted that space to match all the Sunday school rooms.
- Replaced the kitchen door to the alley.

All of these projects were done by funds from the Birmingham Fund, Gettens Fund and the Hollingsworth Fund.

Projects facing us in the future include refurbishing the last 50% of the casement windows throughout the church, restoration of other stained glass windows, planning and developing the parking lots, replacing all old fluorescent lighting throughout the building and, last but not least, addressing the costs of the air-conditioning and lighting of the sanctuary.

It has been a pleasure serving on the Property and Finance Committee, especially so because of the funds that enable us to continue improving our historic building. I would like to thank Keith Huey for his excellent work in maintaining this building.

Respectfully submitted,  
Sheila Caramella, Chair



## Budget Task Force – Special Report 2011

---



---

God has blessed First Presbyterian Church with over 220 years of productive service and ministry here in Greensburg. Of course, this record has not been achieved without challenges. With a few exceptions, the last two decades have witnessed deficit annual budgets. Our projected budget deficit for 2012 is a staggering \$56,000! Because of this ongoing budget problem, a task force was formed within the Session to explore the problem and offer solutions to it. The task force has two main objectives: First, to examine and attempt to understand the causes of our operating deficit and secondly, to propose solutions to alleviate it. As your Session, we believe that we share a responsibility to help make this church an effective witness for today, and also for future generations of our congregation. In keeping faithful to this responsibility we are obligated to keep on a sound financial path.

The task force gathered information comparing our church to similar churches in our presbytery. This provided two useful pieces of information. First, that our budget situation is *not* unique. Other churches are

struggling with the same issues! Second, it allowed us to see how our expenditures compared, on average, to other churches like ours. Although there is some variation from church to church, there is no particular area where our budget is incongruent with those of our peer churches.

The task force also looked closely at our current budget, searching for cost-cutting opportunities. Several items were identified, changes recommended, and when implemented will help to reduce the deficit. This will not be enough to cover the shortfall. Further cuts could be made in the areas of missions, personnel or programming; however the task force is agreed that these cuts would be counterproductive to the church's mission of spreading God's Word.

Augmenting the church's income from other sources is another area the task force explored. Whittle-Gray Day Care rent will be increased starting in 2012 and will be evaluated annually. It may be possible to increase income from our preschool program. Wedding fee increases will help a little. Promoting gifts to First Presbyterian Church through designation in wills or interests in foundations is also being considered. All of these items being deliberated will help but they will not address our fundamental problem- our giving problem, which is not an issue about money. It is an issue about faith. When analyzing the comparative budget data it was discovered that our annual, average per member giving (\$450) is clearly below both local (about 22% lower) and national averages (about 62% lower). This sounds like an enormous gulf to cross, yet when we analyze our recent deficit per capita, it is only a little over \$50 per member.

The theme for the upcoming Stewardship Campaign for 2012 is "A Generous Undertaking." In 2<sup>nd</sup> Corinthians chapter 9 the Apostle Paul said, "Now as you excel in everything- in faith, in knowledge, in utmost eagerness, and in our love for you- so we want you to excel in this generous undertaking. " This will be our theme. What does our faith look like at FPC? Let our generosity, our giving to God's Work, be a reflection of that faith. Let us proceed into the coming year fearless, and confident that God, who is so faithful to us, will see us through these trying times.



## Stewardship Committee

---

---

The committee was served by Leigh Bach, Cal Pollins, ruling elders on the Session, as well as at-large members from the congregation: Scott Brown, Nick Fazi, Bill Markle, and Terry Wansor. The Reverend Martin Ankrum served as an ex-officio member.

This committee began the year faced with yet another year of projected deficit spending. Undaunted by the task this committee, guided by the Holy Spirit, built on desire of the congregation to strengthen our stewardship efforts to further the missions of the church.

Thanks be to God, pledges for the year 2011 came in slightly above the previous year's pledges while an end of the year effort aimed at balancing the budget resulted in a dramatic departure from the originally projected \$54,000.00 deficit. While still ending the year with a deficit, it was reduced to \$5,400.00. That is amazingly good news for our congregation!!! It is the kind of success that a congregation can build upon in the future. I was honored to serve with this committee and pray that these good works continue into 2012.

Respectfully Submitted,  
Leigh Bach, Chair



## Worship Committee

---

---

From the Book of Order, “Christian Worship joyfully ascribes all praise and honor, glory and power, to the triune God.” In worship, we as God’s people acknowledge God’s presence in the world and in our lives. At First Presbyterian Church our worship includes the preaching of the word, the celebration of the sacraments and the offering of praise to God with our beautiful music.

In 2011, our Sunday School children continued to attend the 9:30 worship service as a prelude to their Sunday School class. A children’s sermon is given at both services.

Ten baptisms were performed by Reverend Ankrum this past year during our worship services. We celebrated the Lord’s supper fifteen times, as one body, united by Christ’s love for us. Home communions are performed for those in need of that service.

As an essential part of worship, to help us express what we can never quite adequately define with words; our traditional music ministry continued embracing a wide range of styles and genres. Music and texts are selected to illuminate the spoke word based on the lessons of the three-year cycled Communion Lectionary. The Chancel Choir, Joyful Noise, Sunday School choirs, Instrumentalists, Soloists and Kirk Ringers participate in our music ministry.

The 2011 Worship Committee:

Chris Terrill – Chair  
Linda Turin – Secretary  
Jeffrey Ruff – Session  
Alice Ann Templeton – Session  
Jim Kellam – Deacon Representative  
Reverend Ankrum – Ex-officio Member  
Edgar Highberger – Ex-officio Member



## Richard D. Laird Memorial Library

---

---

Gerald Cumer, Librarian

Some major changes occurred in the Laird Memorial Library in 2011. Automation of the catalog records was completed, and the new computerized *SAFARI LIBRARY CATALOG* and circulation systems were installed. (The outdated card catalog will be removed.) Architectural changes included the erection of a partial wall at the front to the library. This wall added several rows of needed shelving and display space for the growing collection.

A new library committee was formed and includes the following: Michael Brighton, Beth McAtee, Wendy McCann, and Chris Terrill.

We continue to maintain the bookmobile placed in the dining room during coffee hour and Second Sunday Suppers.

A total of 59 materials were cataloged between January and December 2011, 11 of which were gifts and 9 were memorial and honorary gifts.

Readership was down again this year. Circulation for 2011 was as follows:

Adult Fiction	19
Adult Nonfiction	40
Children & Young Adult Books	28
Videotapes, CDs, and DVDs	<u>3</u>
<b>Total Items Borrowed</b>	<b>90</b>

Look for newly added books on display in the library and on the dining room book cart. Church members are invited to suggest items for purchase or to donate appropriate items. Donations may be in honor of someone or in memory of someone.



---

---

## Monday Morning Sewing Group

---

---

The seven women who gather regularly on Mondays at 9 a.m. to cut and sew have been busily making baby receiving blankets and gowns for shipment to Sudan, in addition to shipping them through the auspices of Church World Service. Church World Service ships Safe Motherhood Kits and Baby Kits to clinics in Africa, Haiti, and other places in the world. These baby items will be distributed by midwives to desperately poor women whose babies would otherwise have no covering. Some of the blankets have gone to Judy Koontz, Chair of the Mission Committee at the Community Presbyterian Church, New Alexandria, where they are assembling Baby Care Kits for delivery through Church World Service.

In 2011 we delivered 150 baby gowns and 500 baby receiving blankets to New Windsor, Maryland by various means. 90 baby gowns and 90 receiving blankets traveled to Sudan with the Rev. Ismail Kanani and his wife, Elizabeth Koko, where they will be distributed to new mothers through clinics operated by the Sudan Presbyterian Evangelical Church.

This dedicated group of women also made some children's dresses which traveled to Sudan with our Sudanese visitors in December for distribution to poor children by the Women's Department of the Sudan Presbyterian Evangelical Church (SPEC).

We would welcome people to join us in our Monday morning sewing adventures. We would also welcome contributions of cotton flannelette in 1 yard or longer pieces, and cotton print fabric in 1 yard or larger amounts. We cannot use synthetic fabrics because they are not suitable for hot climates. We would also welcome gifts of money to help us purchase the fabric we need to keep six women sewing and one woman cutting.



## Highlanders

---

---

Maintaining old friendships and building new relationships is a key ingredient for participants in Highlanders. Creative programs and catered meals keep ‘em coming month after month, as this longstanding social group changes and adapts to attendees’ needs and interests

Meeting October through December and March to May on the first Friday of the month, the group welcomes guests and visitors but is built on a solid core of longtime members who consider this get-together an integral part of their routine. And those who make their home at Redstone Highlands benefit from the faithfulness of the volunteer van driver who also enjoys the evening meal and entertainment.

The group continues to be shepherded by steering committee members Lois Ann Watson, Carolyn Falcon, Robin Jennings, Betsy Hoeldtke and Barbara Ferrier, and supported by faithful dishwashers Linda Tatters and Ed Michalak. The selection of a regular caterer along with the support of FPC sextons who provide room setup keeps this valuable church ministry humming. And hosts and hostesses from among the group help with serving, as many hands make light work.

Having had great success ending our program year at Redstone Highlands each May, the steering committee decided that perhaps other “field trips” might also be of interest. Homeowners of the residence that predates Redstone Highlands opened their doors to our group last fall for dinner and a tour. This beautifully restored property on Second Avenue will soon become a bed and breakfast.

Powderpuff football plays, the music of the Westmoreland Choral Society, and upcoming outing to the Westmoreland Museum of America Art assure the programming is stimulating and eclectic. But what is most important is the quality time spent among friends and family.

Submitted by Robin Jennings.



## Financial Reports (pages F-1 through F-15)

---

---

### Table of Contents

<b>General Fund 2012 Budget</b>	<b>F-1 - F-4</b>
<b>Balance Sheet</b>	<b>F-5 - F-7</b>
<b>Financial Highlights</b>	<b>F-8</b>
<b>Special and Memorial Funds 2011</b>	<b>F-9</b>
<b>Gertrude Price &amp; Donald C.W. Birmingham Memorial Fund</b>	<b>F-10</b>
<b>Surplus (Deficit) Graph</b>	<b>F-11</b>
<b>Worship Offerings 1996 – 2011 Graph</b>	<b>F-12</b>
<b>Current Assets Graph</b>	<b>F-13</b>
<b>Balance Sheet 1982 – 2011 Table</b>	<b>F-14</b>
<b>Receipts &amp; Disbursements 1997 – 2011 Table</b>	<b>F-15</b>

**First Presbyterian Church**  
**General Fund 2012**  
**Budget**

		2011 Actual	2011 Budget	2012 Budget	Change from 2011 Budget	Notes
<b>Receipts</b>						
Receipts	Worship Offerings	\$463,744	\$444,830	\$427,549.57	-3.88%	
Receipts	SS Offerings	\$731	\$800	\$650.00	-18.75%	
Receipts	Misc. Donations	\$3,679	\$1,500	\$1,500.00	0.00%	
Receipts	Building Use Donations	\$10,178	\$9,000	\$9,500.00	5.56%	
Receipts	Trusts & Foundations Other	\$13,330	\$15,000	\$13,000.00	-13.33%	
Receipts	Mabel Hugus Trust	\$42,000	\$42,000	\$42,000.00	0.00%	
Receipts	Preschool Tuition	\$80,817	\$90,000	\$90,000.00	0.00%	
Receipts	7:06/Deep End Income	\$750	\$1,600	\$1,600.00	0.00%	
Receipts	VBS Receipts	\$1,129	\$450	\$450.00	0.00%	
Receipts	Deacon's Receipts	\$1,243	\$1,500	\$1,500.00	0.00%	
<b>Total Operating Receipts</b>		<b>\$617,602</b>	<b>\$606,680</b>	<b>\$587,749.57</b>	<b>-3.12%</b>	
<b>Disbursements</b>						
<b>Church Missions</b>		<b>11%</b>	<b>11%</b>		<b>11.00%</b>	
Expense	PC USA Direct Support	\$35,650	\$35,650	\$34,256	-3.91%	
Expense	FPC Mission Fund	\$13,369	\$13,369	\$12,846	-3.91%	
<b>Total Missions</b>		<b>\$49,019</b>	<b>\$49,019</b>	<b>\$47,101.95</b>	<b>-3.91%</b>	
<b>Ministerial Expenses</b>						
Expense	Minister's Salary	\$ 50,731.92	\$ 50,732.24	\$ 52,000.54	2.50%	
Expense	Minister's Manse & Utilities	\$21,217.92	\$ 21,218.00	\$ 21,748.45	2.50%	
Expense	Minister's Pension & Medical Ins.	\$23,231.28	\$ 24,398.15	\$ 24,379.06	-0.08%	Note 3
Expense	Minister's Insurance Deductible	\$780.73	\$ 1,800.00	\$ 1,845.00	2.50%	
Expense	Minister's Study Leave (Continuing Ed)	\$1,500.00	\$ 1,500.00	\$ 1,537.50	2.50%	
Expense	Minister's FICA Contribution	\$5,504.16	\$ 5,504.19	\$ 5,641.80	2.50%	
Expense	Minister's Professional Expenses	\$4,872.00	\$ 3,704.79	\$ 3,797.50	2.50%	
Expense	Minister's Dental Insurance	\$1,217.04	\$ 1,500.00	\$ 1,217.04	-18.86%	Note 3
Expense	Minister's Book Allowance	\$1,000.00	\$ 1,000.00	\$ 1,025.00	2.50%	
<b>Minister's Subtotal</b>		<b>\$110,055.05</b>	<b>\$111,357.37</b>	<b>\$113,191.89</b>	<b>1.65%</b>	Note 4
Expense	Minister of Visitation Salary	\$ 15,403.44	\$ 15,913	\$ 16,311	2.50%	
Expense	Minister of Visitation Travel Allowance	\$2,996.02	\$2,000	\$2,000	0.00%	
<b>Assistant Minister Subtotal</b>		<b>\$18,399.46</b>	<b>\$17,913</b>	<b>\$18,311</b>	<b>2.22%</b>	
Expense	Other Ministerial Expense	\$0	\$300	\$300.00	0.00%	
<b>Total Ministerial Expenses</b>		<b>\$128,454.51</b>	<b>\$129,571</b>	<b>\$131,803.22</b>	<b>1.72%</b>	
<b>Music Ministry Program</b>						
Expense	Minister of Music Salary	\$ 53,100.00	\$ 53,100.24	\$ 55,635.74	4.77%	Note 1
Expense	Minister of Music FICA	\$ 4,062.24	\$4,062.17	\$ 4,256.13	4.77%	
Expense	Minister of Music Medical	\$ 5,118.70	\$5,000.00	\$2,400	-52.00%	Note 1

**First Presbyterian Church**  
**General Fund 2012**  
**Budget**

		2011 Actual	2011 Budget	2012 Budget	Change from 2011 Budget	Notes
	<b>Minister of Music Subtotal</b>	<b>\$ 62,280.94</b>	<b>\$62,162.41</b>	<b>\$62,291.88</b>	0.21%	
Expense	Salaries - Other Music Staff	\$ 7,944.96	\$ 7,945.26	\$ 8,143.89	2.50%	
Expense	Contracted Music Assistants	\$ 4,117.00	\$ 4,117.00	\$4,219.93	2.50%	
Expense	Social Security Other Music Staff	\$ 607.80	\$ 607.81	\$623.01	2.50%	
Expense	Music Supplies	\$4,721.44	\$ 4,720.00	\$4,420.00	-6.36%	
Expense	Music Stipends	\$2,650.00	\$ 3,000.00	\$3,000.00	0.00%	
Expense	Organ, Pianos, & Handbells Maint	\$4,700.00	\$ 4,700.00	\$5,000.00	6.38%	
	<b>Total Music Ministry Program</b>	<b>\$87,022.14</b>	<b>\$87,252.48</b>	<b>\$87,698.70</b>	0.51%	
<b>Education</b>						
Expense	Minister To Youth Salary	\$36,896	\$36,896	\$ 39,786	7.83%	Note 2
Expense	Minister To Youth FICA	\$2,822	\$2,823	\$3,044	7.83%	
Expense	Minister To Youth Medical Insurance	\$6,332	\$6,000	\$2,400	-60.00%	Note 2
Expense	Minister To Youth Travel & Expenses	\$1,134	\$1,500	\$1,500	0.00%	
	<b>Minister To Youth Subtotal</b>	<b>\$47,184</b>	<b>\$47,218</b>	<b>\$46,730</b>	-1.04%	
Expense	Director of Christian Education	\$10,030	\$10,030	\$ 10,281	2.50%	
Expense	DCE FICA	\$767	\$767	\$786.51	2.50%	
	<b>DE Subtotal</b>	<b>\$10,797</b>	<b>\$10,798</b>	<b>\$11,067.72</b>	2.50%	
Expense	PS Salaries	\$46,688	\$46,537	\$ 47,701	2.50%	
Expense	Substitute Teachers	\$695	\$1,100	\$1,100.00	0.00%	
Expense	FICA	\$3,579	\$3,560	\$3,649	2.50%	
Expense	School Supplies & Contingency	\$3,871	\$4,400	\$4,400	0.00%	
	<b>Preschool Subtotal</b>	<b>\$54,832</b>	<b>\$55,597</b>	<b>\$56,850</b>	2.25%	
Expense	Campus Ministry Compensation	\$2,691	\$6,000	\$0	-100.00%	
Expense	Campus Ministry Expenses	\$0	\$0	\$0	0.00%	
Expense	Sunday School	\$2,608	\$3,000	\$3,000	0.00%	
Expense	Vacation Bible School	\$643	\$650	\$650	0.00%	
Expense	Youth Ministry	\$2,173	\$2,000	\$2,000	0.00%	
Expense	College/Young Adult Ministry	\$0	\$0	\$0	0.00%	
Expense	Library	\$892	\$900	\$800	-11.11%	
Expense	Nursery Personnel	\$2,100	\$2,250	\$2,250	0.00%	
Expense	Education Misc.	\$253	\$400	\$400	0.00%	
Expense	Confirmation Class	\$712	\$900	\$900	0.00%	
Expense	7:06/Deep End Program	\$1,246	\$1,800	\$1,800	0.00%	
	<b>Other Ed. Subtotal</b>	<b>\$13,318</b>	<b>\$17,900</b>	<b>\$11,800.00</b>	-34.08%	
	<b>Total Education</b>	<b>\$126,132</b>	<b>\$131,514</b>	<b>\$126,447.43</b>	-4.11%	
<b>Church Program Administration</b>						
Expense	Salaries - Office Staff	\$57,848	\$57,848	\$ 59,294	2.50%	
Expense	Salaries - Sextons	\$48,653	\$46,376	\$ 47,535	2.50%	
Expense	Medical Ins. - Blue Cross	\$7,200	\$7,200	\$7,200	0.00%	
Expense	Office Staff and Sextons FICA	\$8,147	\$7,973	\$8,172	2.50%	

**First Presbyterian Church**  
**General Fund 2012**  
**Budget**

		2011 Actual	2011 Budget	2012 Budget	Change from 2011 Budget	Notes
Expense	Worker's Compensation	\$2,655	\$2,583	\$2,600	0.66%	
Expense	Staff Retirement	\$5,109	\$6,500	\$6,000	-7.69%	
	<b>Subtotal Salaries &amp; Benefits</b>	<b>\$129,612</b>	<b>\$128,479</b>	<b>\$130,801</b>	<b>1.81%</b>	
Expense	Advertising	\$1,036	\$1,000	\$800	-20.00%	
Expense	Payroll Expense	\$1,959	2,100.00	\$1,800	-14.29%	
Expense	Office Supplies	\$4,542	5,300.00	\$4,800	-9.43%	
Expense	Postage	\$5,202	5,050.00	\$5,100	0.99%	
Expense	PO Box and Meter Rental	\$1,180	1,150.00	\$1,200	4.35%	
Expense	Printing	\$506	700.00	\$400	-42.86%	
Expense	Contribution Envelopes	\$736	800.00	\$775	-3.13%	
Expense	Session Expense	\$337	\$750	\$500	-33.33%	
Expense	M&E Committee	\$388	\$1,000	\$1,000	0.00%	
Expense	Mission Committee	\$0	\$100	\$100	0.00%	
Expense	Stewardship Committee	\$460	\$200	\$200	0.00%	
Expense	Worship Committee	\$488	\$400	\$500	25.00%	
Expense	Deacons Expense	\$3,063	\$3,600	\$3,600	0.00%	
Expense	Decorations	\$575	\$675	\$675	0.00%	
Expense	Telephone and Internet	\$2,522	\$2,700	\$2,700	0.00%	
Expense	Softball Team	(\$581)	\$600	\$0	-100.00%	
Expense	Professional Services	\$2,600	\$2,300	\$2,500	8.70%	
Expense	Computer Support Contract	\$0	\$0	\$0	0.00%	
Expense	Copier Lease	\$9,007	\$9,200	\$9,200	0.00%	
Expense	Mother/Daughter Banquet	\$0	\$0	\$300	#DIV/0!	
	<b>Total Church Program Administration</b>	<b>\$163,633</b>	<b>\$166,104</b>	<b>\$166,951</b>	<b>0.51%</b>	
	<b>Maintenance &amp; Occupancy</b>					
Expense	Building and Grounds	\$13,002.03	\$10,000	\$10,300	3.00%	
Expense	Snow Removal	\$3,560.00	\$4,000	\$4,560	14.00%	
Expense	Kitchen Supplies	\$642.80	\$500	\$650	30.00%	
Expense	Office Equipment Service & Repairs	(\$256.42)	\$900	\$600	-33.33%	
Expense	Gas	\$22,478.52	\$28,621	\$24,500	-14.40%	
Expense	Electric	\$12,254.84	\$13,200	\$13,200	0.00%	
Expense	Garbage	\$1,378.80	\$1,379	\$1,379	-0.01%	
Expense	Sewage	\$666.75	\$900	\$750	-16.67%	
Expense	Water	\$693.01	\$900	\$800	-11.11%	
Expense	Insurance Premiums	\$10,202.00	\$12,300	\$11,000	-10.57%	
Expense	Janitorial Supplies	\$4,140.06	\$3,500	\$3,800	8.57%	
	<b>Total Maintenance &amp; Occupancy</b>	<b>\$68,762</b>	<b>\$76,200</b>	<b>\$71,539</b>	<b>-6.12%</b>	
	<b>Total Operating Disbursements</b>	<b>\$623,023</b>	<b>\$639,661</b>	<b>\$631,541</b>	<b>-1.27%</b>	

**First Presbyterian Church  
General Fund 2012  
Budget**

	2011 Actual	2011 Budget	2012 Budget	Change from 2011 Budget	Notes
<b>Total Operating Receipts</b>	<b>\$617,602</b>	<b>\$606,680</b>	<b>\$587,750</b>	-3.12%	
<b>Total Operating Disbursements</b>	<b>\$623,023</b>	<b>\$639,661</b>	<b>\$631,541</b>	-1.27%	
<b>Net Operating Income (Loss)</b>	<b>(\$5,421)</b>	<b>(\$32,980)</b>	<b>\$ (43,791.86)</b>	32.78%	
Note 1 - The Minister of Music salary was increase \$1,208 to off-set the change to standardize benefits across staff.					
Note 2 - The Minister To Youth salary was increase \$1,968 to off-set the change to standardize benefits across staff.					
Note 3 - The amount is set by the Presbytery. In the past, the budget was higher then the actual amounts. For the 2012 budget, -					
this amount was recalculated and accurately set for actual 2012 amounts.					
Note 4 - The head of staff received a 2.5% raise in all the accounts the church controls. Due to the recalculation -					
of Minister's Pension & Medical Insurance and Dental (See Note 3), the overall percentage increase is lower than 2.5%.					

First Presbyterian Church  
**Balance Sheet (UNAUDITED)**  
Consolidated - December 2011  
Pre-Audit/Review

		Current Year	Previous Year
<b>ASSETS</b>			
<b>BANK ACCOUNTS</b>			
<b>CHECKING ACCOUNTS</b>			
	S&T Bank Checking Account	\$1,400.55	\$1,457.15
<b>SAVINGS ACCOUNTS</b>			
	Greensburg Community FCU	1,180.49	1,047.33
	S&T Money Market Fd.	70,250.03	83,856.51
Subtotal Savings Accounts		71,430.52	84,903.84
Subtotal Bank Accounts		72,831.07	86,360.99
<b>INVESTMENTS</b>			
	S&T Management Agency Fd	267,087.11	296,224.11
	S&T Birmingham Fund	64,655.01	43,843.38
	S&T Endowment Fund	357,022.71	362,916.39
	Richard Coulter Trust	75,850.56	80,106.41
	James & Terzah Ross Trust	150,820.98	160,093.51
Subtotal Investments		915,436.37	943,183.80
<b>FIXED ASSETS</b>			
<b>LAND</b>			
	Main Street Property	125,000.00	125,000.00
	South Penna. Ave. Lot	14,876.80	14,876.80
	311 S. Pa. Ave. Prkng Lot	37,376.65	37,376.65
	3rd St. Parking Lot	25,320.54	25,320.54
	16 W. 3rd St. Parking Lot	48,976.08	48,976.08
	307 S. Penna. Ave. Lot	102,599.02	102,599.02
Subtotal Land		354,149.09	354,149.09
<b>BUILDINGS</b>			
	Main Structure& Additions	9,628,577.00	9,366,662.00
<b>VEHICLES</b>			
	Church Van	12,500.00	13,500.00
<b>EQUIPMENT</b>			
	Sanctuary Organ	957,600.00	957,600.00
	Equip. Frnshngs & Devices	631,664.00	622,543.00
Subtotal Equipment		1,589,264.00	1,580,143.00
Subtotal Fixed Assets		11,584,490.09	11,314,454.09
<b>OTHER ASSETS</b>			
	Due to Investment Fund	0.00	61,022.95
<b>TOTAL ASSETS</b>		<b>\$12,572,757.53</b>	<b>\$12,405,021.83</b>

LIABILITIES

CURRENT LIABILITIES

PAYROLL DEDUCTIONS

TAXES PAYABLE

Local Taxes Payable	\$11.83	\$0.00
Local Services Tax (EMS)	129.40	127.39

Subtotal Taxes Payable 141.23 127.39

Subtotal Payroll Deductions 141.23 127.39

SPECIAL FUNDS

Designated Special Gifts	223.93	223.93
Poinsettia & Lily Account	412.40	360.65
Funeral Luncheons	158.53	158.53
Monday Sewing Group	97.19	95.75
Youth Mission Projects	12,385.31	12,166.54
Christian Camp Fund	1,649.48	1,065.40
Spaghetti Dinners	118.32	70.81
Boy Scout Fund	644.15	634.55
Sanctuary Cooling Fund	51,069.57	49,436.93
Pastor's Discretionary Fd	500.00	500.00
Due to Missions	2,650.79	6,759.17
James M. Hutchison Fund	5,303.01	5,320.47
Golf Fellowship	48.10	47.38
Mother-Daughter Banquet	206.91	203.85
World Vision	0.00	170.06
Campus Ministry	2,601.16	2,553.38

Subtotal Special Funds 78,068.85 79,767.40

MEMORIAL FUNDS

J.C. Jamison Church Pub.	34.52	34.52
E. S. Highberger Organ & Fred A. Welty Music Fund	3,288.31	4,915.99
L.W. & R.S. Cole Music Fd	3,487.77	8,234.48
Thomas P. Cole, III Music	5.07	43.44
Library Memorials	31.12	114.93
Bible Fund	60.47	43.92
Seminary Fund	196.22	191.16
Welty/Purnell Seminary Fd	41,643.45	41,022.74
Unassigned Memorials	27,642.61	27,230.58
Slate Roof Fund	7,631.69	6,724.16
G.P. & D.C.W. Birmingham	3,407.70	3,337.00
Edna&Elizabeth Kallie Fd.	64,655.01	43,843.38
Ruth K. Heston Mem. Fund	4,151.20	6,949.51
Virginia G. Noel Youth Sc	2,325.92	2,291.25
C.B. & L.F. Hollingsworth	7,251.25	7,143.16
Beatrice H. VanAtta Fund	12,720.00	21,607.20
Larry Garlock Memorial Fd	8,497.40	8,922.98
	0.00	11,350.00

Subtotal Memorial Funds 187,029.71 194,000.40

TOTAL LIABILITIES 265,239.79 273,895.19

NET ASSETS			
UNRESTRICTED			
	Operating Fund Net Assets	(\$173,336.74)	(\$167,915.71)
	Investment Fd. Net Assets	282,653.19	316,167.07
	Capital Camp. Net Assets	0.00	(20,340.80)
	Inv. Designated Endowment	276,356.32	276,356.32
	Subtotal Unrestricted	385,672.77	404,266.88
TEMP. RESTRICTED FUNDS			
	Preschool Fund	22,207.65	22,707.11
	Lord Trusts	491.62	491.62
	Resrv for Deferred Maint.	1,424.00	1,424.00
	Due from Cap. Camp.	0.00	61,022.95
	Subtotal Temp. Restricted Funds	24,123.27	85,645.68
PERMANENTLY RESTRICTED			
	Richard Coulter Trust	75,850.56	80,106.41
	James W. & Terzah Ross Tr	150,820.98	160,093.51
	Edna Kallie Mission Fund	2,000.00	2,000.00
	Ruth K. Heston Mem. Fund	2,000.00	2,000.00
	Helen M. Rice Mem. Fund	39,742.58	39,742.58
	Fred A. Welty Music Fund	42,817.49	42,817.49
	Surp. Inv. in Facilities	11,584,490.09	11,314,454.09
	Subtotal Permanently Restricted	11,897,721.70	11,641,214.08
	TOTAL EQUITY	12,307,517.74	12,131,126.64
	TOTAL LIABILITIES AND EQUITY	\$12,572,757.53	\$12,405,021.83

**Note: We received two adjustments due to the Industrial Appraisal updates since the last annual report.**





## Special and Memorial Funds 2011

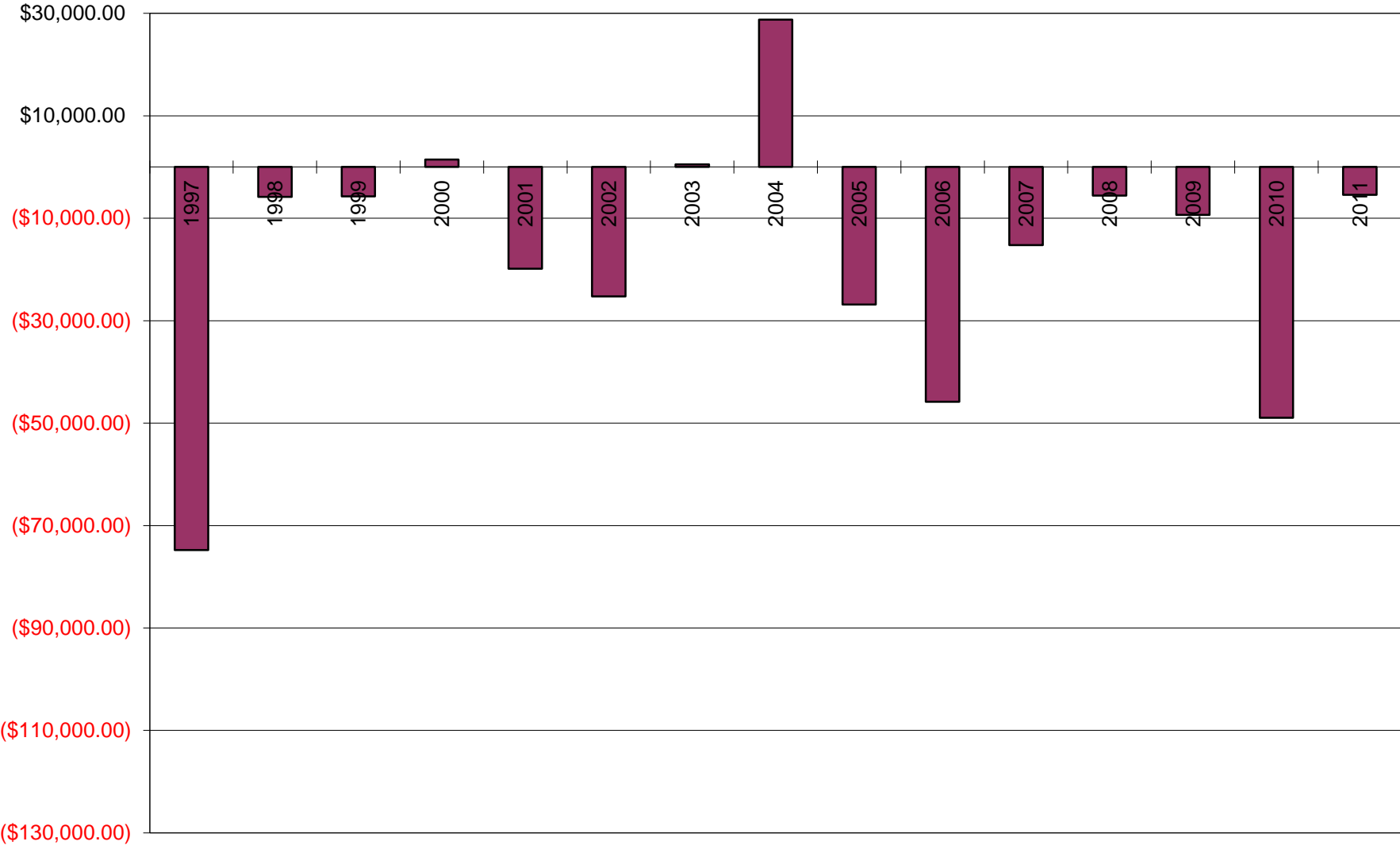
	Beginning Balance	Receipts	Disbursements	Ending Balance
<b>SPECIAL FUNDS</b>				
Designated Special Gifts	\$223.93	0.00	0.00	\$223.93
Poinsettia & Lily Account	360.65	1,859.00	1,807.25	412.40
Funeral Luncheons	158.53	569.86	569.86	158.53
Monday Sewing Group	95.75	1.44	0.00	97.19
Youth Mission Projects	12,166.54	5,593.48	5,374.71	12,385.31
Christian Camp Fund	1,065.40	1,084.08	500.00	1,649.48
Spaghetti Dinners	70.81	1,583.15	1,535.64	118.32
Boy Scout Fund	634.55	9.60	0.00	644.15
Sanctuary Cooling Fund	49,436.93	10,865.52	9,232.88	51,069.57
Pastor's Discretionary Fd	500.00	3,424.03	3,424.03	500.00
Due to Missions	6,759.17	59,298.39	63,406.77	2,650.79
James M. Hutchison Fund	5,320.47	80.49	97.95	5,303.01
Golf Fellowship	47.38	0.72	0.00	48.10
Mother-Daughter Banquet World	203.85	3.06	0.00	206.91
Vision	170.06	0.00	170.06	0.00
Campus Ministry	2,553.38	1,337.05	1,289.27	2,601.16
 Subtotal Special Funds	 79,767.40	 85,709.87	 87,408.42	 78,068.85
<b>MEMORIAL FUNDS</b>				
J.C. Jamison Church Pub.	34.52	0.00	0.00	34.52
E. S. Highberger Organ & Fred A. Welty Music Fund	4,915.99	14,179.19	15,806.87	3,288.31
L.W. & R.S. Cole Music Fd	8,234.48	1,236.29	5,983.00	3,487.77
Thomas P. Cole, III Music Library Memorials	43.44	0.63	39.00	5.07
Bible Fund	114.93	127.19	211.00	31.12
Seminary Fund	43.92	191.14	174.59	60.47
Unassigned Memorials	191.16	5.06	0.00	196.22
Slate Roof Fund	41,022.74	620.71	0.00	41,643.45
G.P. & D.C.W. Birmingham	27,230.58	412.03	0.00	27,642.61
Edna&Elizabeth Kallie Fd.	6,724.16	8,559.88	7,652.35	7,631.69
Ruth K. Heston Mem. Fund	3,337.00	70.70	0.00	3,407.70
Virginia G. Noel Youth Sc	43,843.38	65,133.16	44,321.53	64,655.01
C.B. & L.F. Hollingsworth	6,949.51	354.73	3,153.04	4,151.20
Beatrice H. VanAtta Fund	2,291.25	34.67	0.00	2,325.92
Larry Garlock Memorial Fd	7,143.16	108.09	0.00	7,251.25
	21,607.20	12,947.72	21,834.92	12,720.00
	8,922.98	132.22	557.80	8,497.40
	11,350.00	146.21	11,496.21	0.00
 Subtotal Memorial Funds	 194,000.40	 104,259.62	 111,230.31	 187,029.71



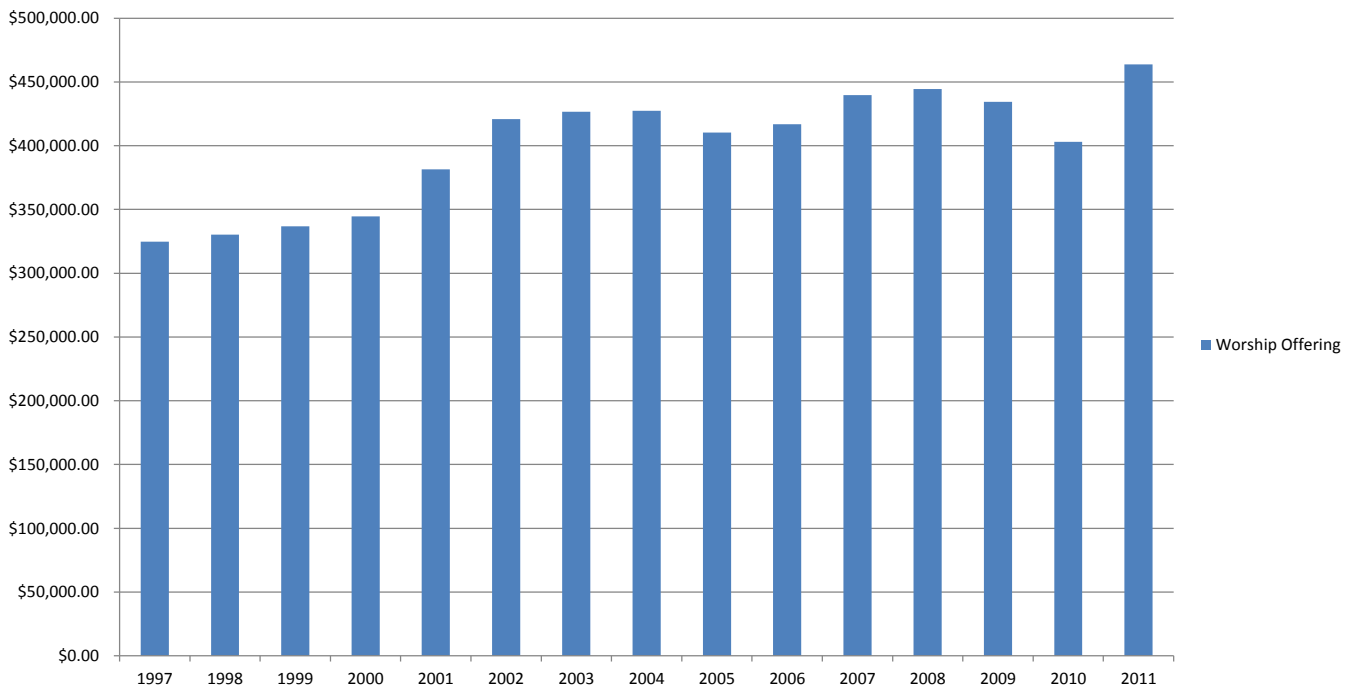
## Gertrude Price & Donald C. W. Birmingham Memorial Fund

	Actual YTD for 2011	Actual YTD for 2010	Actual YTD for 2009	Actual YTD for 2008	Actual YTD for 2007	Totals
Receipts	65,000.00	65,000.00	65,000.00	65,000.00	65,000.00	520,000.00
Interest	133.16	80.74	263.80	1,269.02	2,701.22	9,637.61
<b>TOTAL RECEIPTS</b>	<b>65,133.16</b>	<b>65,080.74</b>	<b>65,263.80</b>	<b>66,269.02</b>	<b>67,701.22</b>	<b>529,637.61</b>
Disbursements						
S&T Bank Fees	422.38	173.23	264.39	388.96	244.09	1,493.05
A & S Heating & Cooling	0.00	0.00	0.00	0.00	282.12	282.12
Greensburg Waterproofing Co., Inc.	0.00	0.00	0.00	0.00	0.00	12,268.00
Hutchinson & Gunter, Inc.	0.00	0.00	0.00	0.00	0.00	16,480.70
Keystone Waterproofing	0.00	0.00	0.00	0.00	0.00	59,030.00
Carpenter Construction Inc.	16,676.46	0.00	63,628.78	0.00	0.00	82,235.34
McMahan Plumbing & Heating	0.00	575.00	65.00	13,597.00	2,776.00	19,152.00
Vik-kel Corp	0.00	0.00	0.00	0.00	275.00	500.00
Deane & Deane, Inc.	0.00	0.00	0.00	0.00	0.00	850.00
Hodge Electric Motors	0.00	0.00	0.00	0.00	0.00	65.00
Combustion Service & Equip.	1,049.11	0.00	0.00	0.00	0.00	3,821.20
Elk Air Conditioning & Heating Inc.	0.00	8986.25	2,650.00	0.00	740.00	13,400.25
Raimondo Construction Co., Inc.	0.00	0.00	0.00	0.00	0.00	36,785.10
Hepler's Town & Country Ent.	0.00	0.00	0.00	0.00	0.00	3,140.00
McBride Electric	1,934.00	0.00	3,389.59	8,748.46	6,535.17	22,536.85
C. Kaylor Display Inc.	115.31	0.00	0.00	0.00	0.00	3,053.07
Scott Electric	18.93	0.00	767.13	0.00	0.00	1,124.66
Larry J. Lint	2,795.00	5757.00	0.00	2,310.00	5,659.00	22,620.00
Karlick Custom Tile	0.00	0.00	0.00	0.00	0.00	432.19
Janitors Supply Co. Inc	0.00	0.00	0.00	0.00	0.00	148.98
Schindler Elevator Corp.	0.00	0.00	1,837.89	2,345.04	953.70	5,507.51
Palco	0.00	0.00	0.00	0.00	394.96	394.96
Jack Snyder	0.00	0.00	0.00	8,400.00	6,700.00	15,100.00
Rampart Security	0.00	0.00	0.00	254.92	178.00	432.92
Kuzmkowski Roofing Inc.	0.00	5900.00	7,658.00	0.00	1,000.00	14,558.00
Ringler Restoration	4,656.00	1000.00	12,401.00	29,377.00	3,256.00	50,690.00
Cavcon Construction Inc.	0.00	0.00	0.00	975.00	22,660.97	23,635.97
Brant's Asphalt	0.00	0.00	0.00	1,430.00	8,350.00	9,780.00
Light Fixtures, Doorknobs,Wallpaper	0.00	0.00	0.00	751.76	0.00	751.76
J & D Floors	0.00	0.00	1,446.90	1,924.14	1,774.15	5,145.19
ASA Concrete Services	0.00	0.00	0.00	600.00	0.00	600.00
Painting Day Care	0.00	0.00	0.00	1,338.27	0.00	1,338.27
Woodstone Interiors	0.00	0.00	186.39	607.76	0.00	794.15
Kitchen Rack Slide	0.00	0.00	0.00	137.18	0.00	137.18
Robert Iezzi Construction	0.00	0.00	0.00	5,604.00	0.00	5,604.00
Moore & Morford Inc.	0.00	0.00	0.00	1,924.00	0.00	1,924.00
TMR Roofing	0.00	0.00	12,300.00	0.00	0.00	12,300.00
Celli-Flynn Brennan, Inc.	11,210.30	0.00	0.00	0.00	0.00	11,210.30
Demilio Inc.	915.40	0.00	0.00	0.00	0.00	915.40
Office Max	1,142.64	0.00	0.00	0.00	0.00	1,142.64
Pittsburgh Stained Glass	3,386.00	0.00	0.00	0.00	0.00	3,386.00
Home Depot	0.00	215.84	0.00	0.00	0.00	215.84
<b>TOTAL DISBURSEMENTS</b>	<b>44,321.53</b>	<b>22,607.32</b>	<b>106,595.07</b>	<b>80,713.49</b>	<b>61,779.16</b>	<b>464,982.60</b>
<b>TOTAL INC. OVER/UNDER EXP.</b>	<b>20,811.63</b>	<b>42,473.42</b>	<b>-41,331.27</b>	<b>-14,444.47</b>	<b>5,922.06</b>	<b>64,655.01</b>

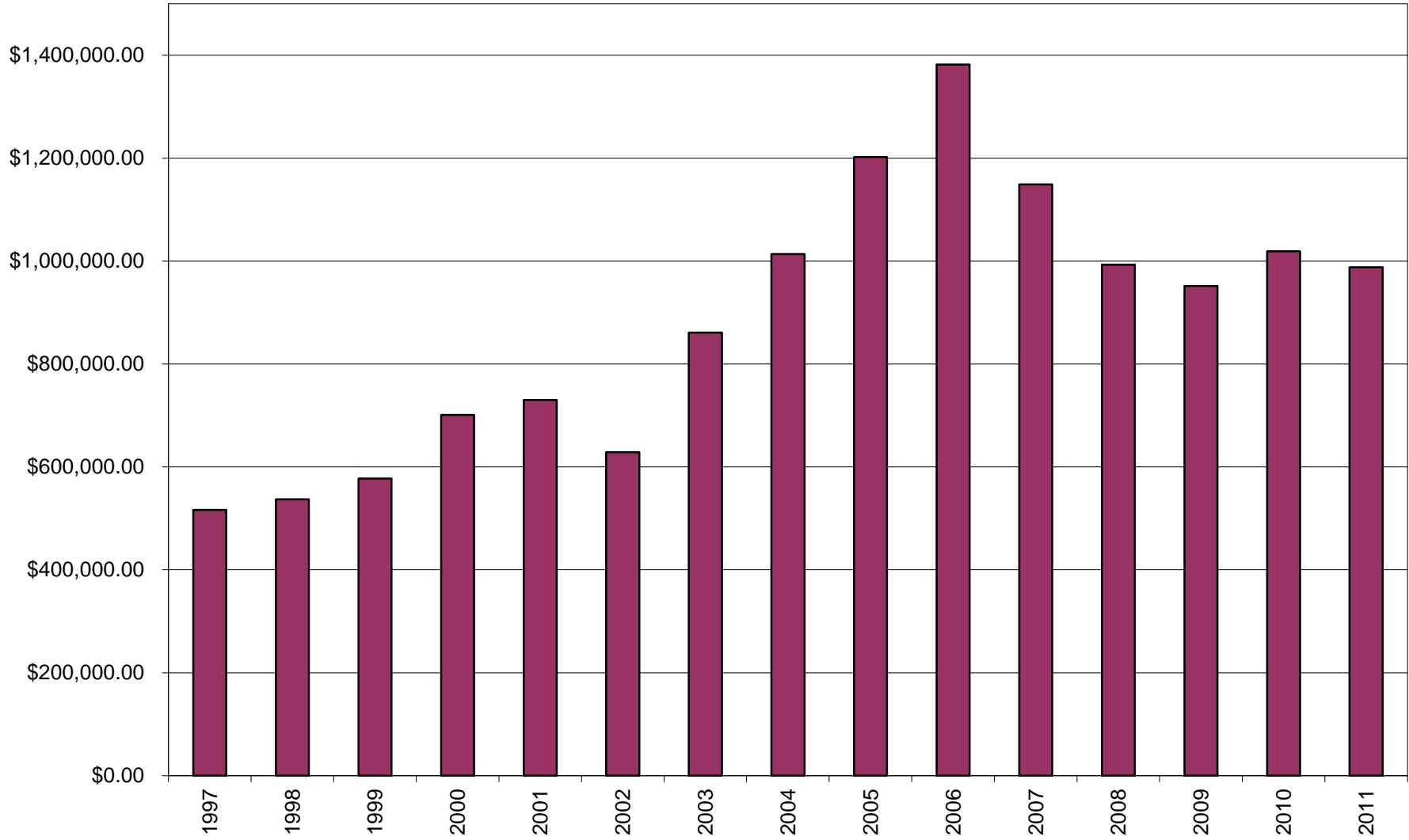
Surplus / (Deficit)



**Worship Offering 1997 - 2011**



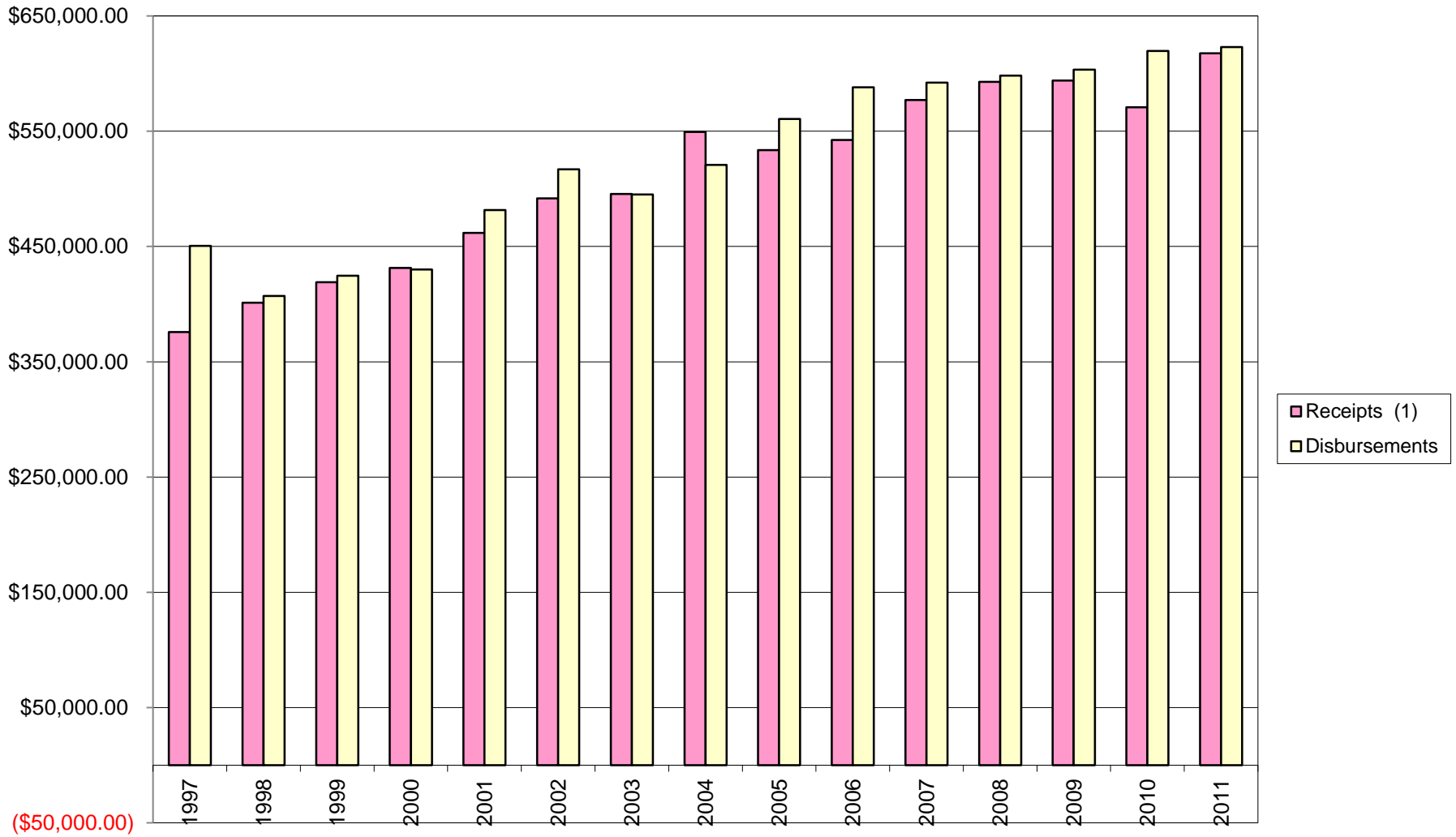
## Current Assets



## First Presbyterian Church Balance Sheet 1982 - 2011

End of Year	Receipts (1)	Disbursements	Surplus / (Deficit)	Worship Offering	Bequests (2)	Current Assets (3)
1982	\$283,022.02	\$274,682.20	\$8,339.82	\$217,653.61	\$6,315.48	\$183,997.29
1983	\$307,448.72	\$288,993.59	\$18,455.13	\$238,795.90	\$12,000.00	\$214,675.24
1984	\$416,407.11	\$304,201.75	\$112,205.36	\$237,308.30	\$119,301.20	\$382,840.76
1985	\$325,934.45	\$300,245.00	\$25,689.45	\$234,496.39	\$0.00	\$551,603.81
1986	\$332,898.39	\$308,991.62	\$23,906.77	\$244,145.42	\$0.00	\$683,299.01
1987	\$450,713.38	\$344,175.04	\$106,538.34	\$251,853.04	\$0.00	\$816,923.37
1988	\$273,884.14	\$299,007.17	(\$25,123.03)	\$258,548.06	\$100,000.00	\$790,762.06
1989	\$298,548.06	\$329,946.15	(\$31,398.09)	\$263,471.38	\$44,722.36	\$858,703.93
1990	\$312,747.67	\$345,322.72	(\$32,575.05)	\$273,312.94	\$379.90	\$741,740.13
1991	\$328,131.91	\$411,534.32	(\$83,402.41)	\$295,778.75	\$45,000.00	\$872,910.39
1992	\$338,701.82	\$428,621.13	(\$89,919.31)	\$309,032.48	\$0.00	\$842,465.83
1993	\$332,558.64	\$459,075.34	(\$126,516.70)	\$308,428.50	\$25,500.00	\$773,733.72
1994	\$323,870.21	\$448,434.04	(\$124,563.83)	\$299,607.39	\$1,000.00	\$693,161.20
1995	\$370,836.45	\$471,266.64	(\$100,430.19)	\$316,091.00	\$30,500.00	\$628,859.19
1996	\$393,908.56	\$463,148.24	(\$69,239.68)	\$333,733.21	\$23,000.00	\$532,127.67
1997	\$375,837.67	\$450,607.08	(\$74,769.41)	\$324,788.29	\$3,674.18	\$516,209.14
1998	\$401,240.45	\$407,063.76	(\$5,823.31)	\$330,337.50	\$15,000.00	\$537,191.00
1999	\$418,980.00	\$424,732.00	(\$5,752.00)	\$336,941.00	\$165,324.00	\$577,568.21
2000	\$431,500.85	\$430,036.27	\$1,464.58	\$344,710.00	\$2,500.00	\$700,839.00
2001	\$461,812.00	\$481,671.00	(\$19,859.00)	\$381,372.00	\$23,695.00	\$730,169.93
2002	\$491,672.89	\$516,939.27	(\$25,266.38)	\$420,860.22	\$0.00	\$628,791.69
2003	\$495,590.31	\$495,097.32	\$492.99	\$426,731.82	\$14,266.67	\$861,017.67
2004	\$549,482.00	\$520,692.00	\$28,790.00	\$427,411.00	\$300.00	\$1,013,873.30
2005	\$533,714.57	\$560,569.96	(\$26,855.39)	\$410,448.52	\$0.00	\$1,202,379.65
2006	\$542,323.34	\$588,153.88	(\$45,830.54)	\$416,919.86	\$0.00	\$1,381,970.80
2007	\$576,975.86	\$592,235.89	(\$15,260.03)	\$439,706.51	\$0.00	\$1,149,157.56
2008	\$592,766.21	\$598,335.41	(\$5,569.20)	\$444,577.15	\$0.00	\$992,905.55
2009	\$593,980.85	\$603,318.96	(\$9,338.11)	\$434,422.07	\$0.00	\$951,729.12
2010	\$570,672.84	\$619,650.06	(\$48,977.22)	\$403,173.70	\$0.00	\$1,019,285.91
2011	\$617,601.52	\$623,022.55	(\$5,421.03)	\$463,743.89	\$0.00	\$988,267.44
Average annual deficit over last 5 years:			(\$16,913.12)			
Average annual deficit over last 10 years:			(\$15,323.49)			
Notes:	(1) Receipts includes offerings, rent, investment income, income from trusts & foundations, but not bequests					
	(2) Bequests are added to the investment fund in the year received					
	(3) Current Assets include checking accounts, savings accounts, and investment funds					

## Receipts and Disbursements



# First Presbyterian Church

300 South Main Street  
Greensburg, PA 15601

phone: 724.832.0150 & fax: 724.832.0152

email: [fpcgreensburg@comcast.net](mailto:fpcgreensburg@comcast.net)

website: [www.fpcgreensburg.com](http://www.fpcgreensburg.com)



## Church Staff

Rev. Mr. Martin R. Ankrum, Pastor / Head of Staff  
Rev. Mr. Michael A. Pacelli, III, Minister to Youth  
Rev. Dr. Douglas E. Holben, Minister of Visitation  
Edgar B. Highberger, Minister of Music and Organist  
Janet L. Schuchman, Director of Education  
Joseph O'Malley, Seminary Assistant for Campus Ministry  
Cheryl A. Kirsch, Executive Secretary  
Lu Ann Peters, Financial Secretary  
Keith L. Huey, Sexton  
Stacy A. Somers, FPC Preschool Supervisor  
Wendy H. Matchett, FPC Preschool Teacher  
Joan L. McGinley, FPC Preschool Teacher  
Anita M. Garr, Director of Elementary Music  
Michelle Stefl Harbaugh, Assistant to the Minister of Music  
Carol A. Scherff, Housekeeper  
Richard P. Fabery & Jenea E. Craig, Assistant Sextons  
Kelli M. Doran and Courtney M. Hutchins, Nursery Care



## Table of Contents

---

---

Board of Deacons	12
Church Officers Nominating Committee	11
Clerk of Session	4
Director of Christian Education	9
Campus Ministry Task Force	11
Financial Reports & Budgets	F-1 – F-15
Highlanders	22
Laird Memorial Library Committee	20
Membership & Evangelism Committee	14
Minister of Music & Organist	7
Mission Committee	15
Monday Morning Sewing Group	21
Necrology Report	2
Pastor / Head of Staff	3
Personnel Committee	17
Property & Finance Committee	17
Stewardship Committee	19
Worship Committee	20
Minister to Youth	5